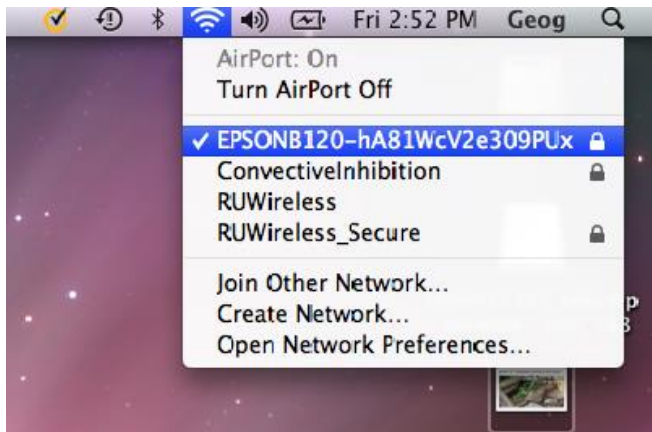


How to Connect Wirelessly to B120 overhead projector

This document outlines the steps to connect wirelessly from an **Apple laptop** to the overhead projector (without the need for VGA or HDMI cables) in Lucy Stone Hall, room B120.

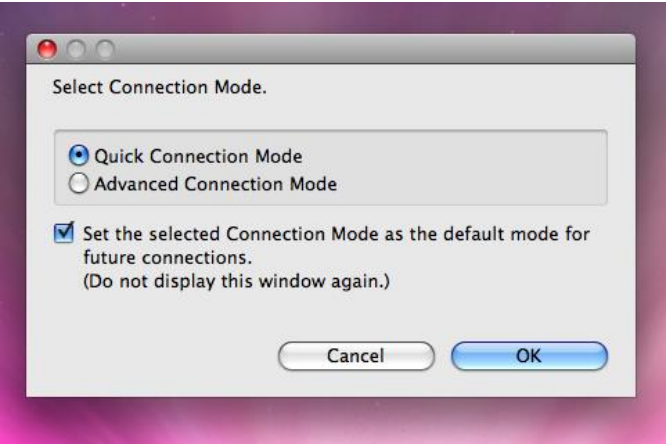
1. You will first need to download and install Epson EasyMP Network Projection client from **Epson's website**, http://www.epson.com/cgi-bin/Store/support/supDetail.jsp?BV_UseBVCookie=yes&oid=35942&infoType=Downloads.
 - a. Note: The website will automatically detect the correct software client for your laptop.
2. **Turn on** overhead projector using the white remote control box located underneath the projector screen.



Airport Wireless menu

Figure 1

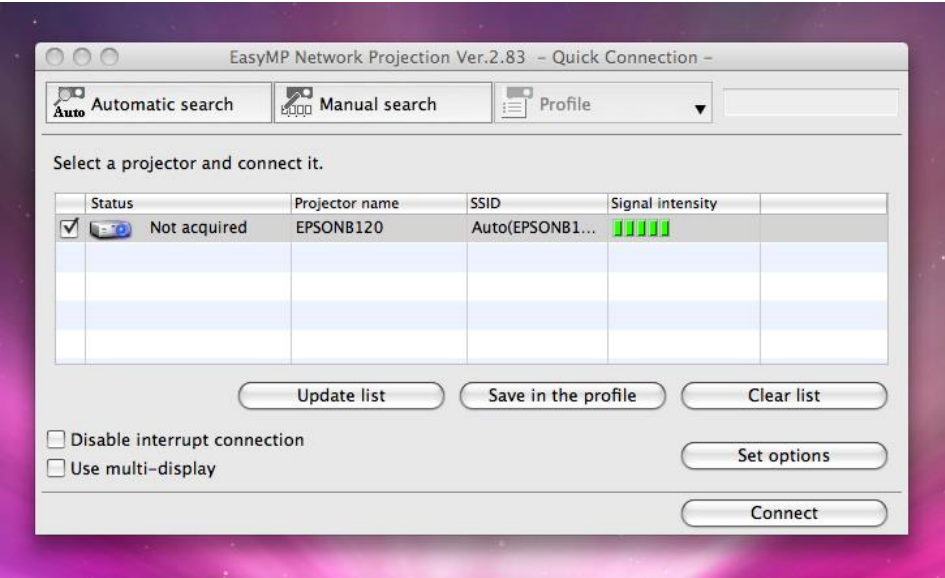
1. In Airport wireless network menu, select **Epsonb120**
2. When prompted, type the required password
3. Click **ok** or **join**



Connection Mode dialog box

Figure 2

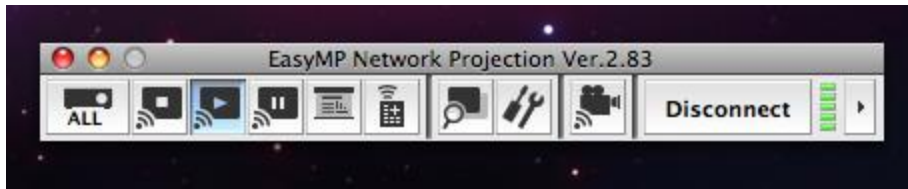
1. In **Applications**, Launch the **Epson EasyMP Network Projection Client**
2. Select **Quick Connection Mode**
3. Select the **checkbox** “**Set the selected mode as the default mode for future connections**”
4. Click **ok**



EasyMP Network Projection dialog box

Figure 3

1. To the left of the **status** field, select the **checkbox** for **EpsonB120** projector
2. Click **connect**
3. Your desktop should appear on the projector screen



EasyMP Network Projection dialog box

Figure 4

1. Once you are finished with your presentation, click **disconnect** button
2. Power **off** the overhead projector