

The Department of Geography is pleased to share highlights of what our faculty, staff, and students have achieved this year. We welcomed another exceptional group of Graduate students in the fall, and we extend our congratulations and best wishes to this year's Ph.D., masters and undergraduate degree recipients.

In the Spotlight

Professor Åsa Rennermalm received tenure and was promoted to Associate Professor in 2015. She studies hydrology and climate in the Arctic region. In this region, observations of accelerated ice sheet mass loss, declining sea ice cover and thawing ground suggest a rapidly changing system. Some of these changes may have global implications, for example in the form of raising sea level from the melting Greenland ice sheet. The production, transport, and export of meltwater generated across the surface of the Greenland ice sheet is critically important to our understanding of global sea level rise, yet remains one of the least studied hydrologic processes on Earth. While the potential impact of increasing meltwater from Greenland on global sea



Professor Åsa Rennermalm during one of her fieldwork trips to the Greenland icesheet. More information at: Arctic Hydroclimatology Research Laboratory

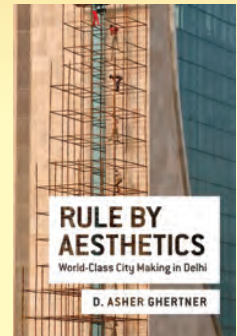
(Rennermalm research continued)

level is clear, another important implication is its potential impact on coastal ocean physics, biogeochemistry, and ecology.

Åsa and her fellow researchers were featured in the N.Y. Times article, "Greenland is Melting Away"

Recently Published

Rule by Aesthetics, by **Asher Ghertner**, offers a powerful examination of the process and experience of mass demolition in the world's second largest city of Delhi, India. Using Delhi's millennial effort to become a 'world-class city,' the book shows how aesthetic norms can replace the procedures of mapping and surveying typically considered necessary to administer space. This practice of evaluating territory based on its adherence to aesthetic norms - what Ghertner calls 'rule by aesthetics' - allowed the state in Delhi to intervene in the once ungovernable space of slums, overcoming its historical reliance on inaccurate maps and statistics.



What exactly constitutes an economy? *Making Other Worlds Possible*, co-edited by **Kevin St. Martin**, brings together a compelling range of projects inspired by the diverse economies research agenda pioneered by J. K. Gibson-Graham. **Robert Snyder** and **Kevin St. Martin** explore the emergence of community-supported fisheries; **Elizabeth Barron** documents how active engagements between people, plants, and fungi in the United States and Scotland are examples of highly productive diverse economic practices; and **Michel Callon** investigates how alternative forms of market organization and practices can be designed and implemented.



Land Fictions: The Commodification of Land in City and Country



[click here for more information](#)

(left to right):
Malini Ranganathan, American University,
Heidi Hausermann, Rutgers University,
Michael Levien, Johns Hopkins University
Robert Lake, Rutgers University

The 8th MaGrann Conference sought to respond to and analyze the mounting market pressures on both urban and rural land use, as well as the associated processes of dispossession such pressures precipitate. The conference brought together twenty leading researchers from the fields of Geography, History, Sociology, Urban Planning and Anthropology to advance the study of rural and urban land development and to explore the geography of land commodification from a comparative perspective. Conference participants delivered presentations that brought new empirical insights on land politics from Sub-Saharan Africa, South Asia, Southeast Asia, North America, and South America into a broader theoretical discussion of commodification, showing how urban and rural processes of dispossession are becoming increasingly interlinked. The conference organizers are currently editing a book based on the conference aimed at advancing a “new political ecology of land” that brings the so-called “agrarian question” to town and the urban question to the countryside.

The eighth MaGrann Conference was organized by Professors **Asher Ghertner** and **Robert Lake**. The MaGrann Conferences are sponsored by the MaGrann Endowment and the Department of Geography, Rutgers University. The Centers for Global Advancement and International Affairs was co-sponsor of the 2015 conference.

Global Climate Change and Inequality: Local To Global Perspectives

This symposium brought together international experts from across the social science disciplines to explore state-of-the-art thinking and research on the problem of inequality linked to expected global climate change and related environmental disasters that occur in different locations and cultures. Since some groups, communities, and nations will be much more vulnerable than others to a changing climate, a fundamental task ahead for scientists and others rests on better understanding who is likely to be affected by a changing climate and related disasters, in what ways they will be most vulnerable, and how might those vulnerabilities be addressed through various social actions, including policies and planning. Also relevant are the social consequences of mitigation policies and other efforts to reduce climate change. If communities and nations are to remain vibrant and resilient, conscious and concerted efforts will be needed to make sure everyone is valued and no one is left behind.

Professor **Robin Leichenko** co-organized this event along with Professor **Steve Brechin** (Sociology) and Geography graduate faculty members, Professor **Karen O’Neill** (Human Ecology) and Professor **Tom Rudel** (Sociology and Human Ecology). The event was part of President Barchi’s First 100 Days Initiative. In addition to Geography, other sponsors included Rutgers Climate Institute (which Leichenko co-directs), Rutgers Centers for Global Advancement and International Affairs; Rutgers Department of Human Ecology and Rutgers Department of Sociology.

[click here for more information](#)

left to right in photo:
Mauro Baldanza, Stephane Hallegatte, Karen O’Neill,
Steven Brechin, Tom Rudel, Karen O’Brien, Teja Pristavec,
Robin Leichenko, Adelle Thomas, Ana Baptista, Lori Peek



Awards, Grants, Honors

Asher Ghertner won an International Collaborative Research Grant from the GAIA Centers. His project, "The Anatomy of a Suburb: Informal Urbanism in Delhi and Mumbai," involves a collaboration with the School of Habitat Studies at the Tata Institute of Social Sciences in Mumbai. \$8000

* Asher's piece, "India's urban revolution: Geographies of displacement beyond gentrification," has received Environment and Planning A's Ashby Prize recognizing the best paper the journal published in 2014.

Robin Leichenko, Co-Principal Investigator (R. Lathrop, PI) "Enhancing the Effectiveness of Decision Support Tools for Coastal Resilience".

NOAA/New Jersey Sea Grant Consortium, \$75,000.

* International Collaborative Research Grant for Tenured Faculty from the GAIA Centers. Her project, "Quantum Leap: Climate Change and Social Transformation," will be looking at the issue of climate change and social transformation in collaboration with colleagues at the University of Oslo. \$8000

Kevin St. Martin, Co-Principal Investigator (in collaboration with colleagues at the University of Massachusetts, Dartmouth and NOAA/NMFS/Northeast Fisheries Science Center, Woods Hole), "Combining Fishermen's Knowledge with Oceanographic and Economic Models to Locate, Evaluate, and Predict Gray Meat Outbreaks in Atlantic Sea Scallops", \$299,551.

*Fellowship recipient. Award to participate in the 2015 Community Economies Theory and Writing Retreat, Bolsena, Italy, August 9-19, 2015.

David Robinson, Ongoing Monitoring and Interpretation of New Jersey's Weather for Emergency Management Decision Makers. NJ Office of Emergency Management, NJ State Police.

* NOAA: "Toward Improving Understanding of Extreme Snow Melt Runoff Events Under Past, Present, and Future Climate".

* NOAA/Global Science & Technology: Snow Cover Climate Data Record Sustainment and Maintenance.

* NOAA/Global Science & Technology: "Improved Columbia Basin Spring Discharge Using Snow Observations".

* NOAA National Weather Service National Mesonet Expansion. Global Science & Technology.

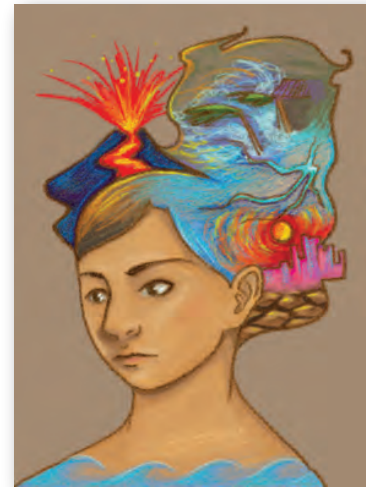
* NJFireNet: continuation. USDA Forest Service.

* The New Jersey Mesonet: Continued Operations and Maintenance. New Jersey Department of Environmental Protection.

Richard Schroeder will serve as SAS Dean of Social and Behavioral Sciences starting September 1, 2015.

Michael Siegel had a new challenge in creating a series of maps for a video called, "Arctic Melt", which focuses on the positive and negative impacts on Inuit culture resulting from oil drilling in Alaska.

The 9th MaGrann symposium on March 2, 2016, "Hazards in Context", will honor the research and scholarship of Professor **James K. Mitchell**.



[click here for more information](#)

If you would like to support Geography at Rutgers, please mail your contribution to us, payable to the Rutgers Foundation, and marked "for the Department of Geography".

Thank you to this year's contributors:

- Kent B. Barnes & Janet E. Barnes
- Timothy H. Brown & Myrna Brown
- Lucy Davis Baruch & Kamala Brush
- Richard O. Davis
- John L. Filippelli & Theresa Filippelli
- Mark MaGrann
- James G. Riely
- Dr. Harbans Singh & Mrs. Mary Sheppard Singh
- C. William Petrics & Catherine L. Petrics
- The JK Group, Inc.

Alumni, Keep Connected!

Department of Geography Alumni Directory:
<http://geography.rutgers.edu/keepconnected/alumni>

Honors, Grants, Awards

Graduate Student **Michael Brady** was awarded a NSF grant of \$13,590. **Robin Leichenko** is PI of this project, entitled "Doctoral Dissertation Research: Mapping Community Exposure to Coastal Climate Hazards in the Arctic: A Case Study in Alaska's North Slope."

Graduate Student **Amelia Duffy-Tumas** volunteered this summer in Harlem with the International Youth Leadership Institute, which works with NYC high school students to develop leadership skills in their hometown as well as during service-learning trips abroad. Amelia was invited to teach an orientation session on cross-cultural communication and to introduce key phrases in Wolof, one of the main languages spoken in Senegal, the soon-to-be host country.

Graduate student **Maria Alexandra Garcia** was awarded the Community Role Model Award for 2015 by the organization Juventud Ecuatoriana for her contribution to empowerment, activism and defense of migrant workers' rights. JUVE recognizes organizers, scholars, entrepreneurs and educators for their contributions to the betterment of Ecuadorian and all migrant communities in the U.S and worldwide. The awardees fundraise to support the Ecuadorian Scholars Fund that helps Ecuadorian students in the U.S finish college.

Graduate student **Monica Hernandez** was awarded a fellowship by the Inter-American Foundation Grassroots Development Fellowship Program (IAF) which is administered by IIE, Institute of International Education. She will be a fellow for 2015-2016.

Graduate student **Jenny Isaacs** has won a Center for Cultural Analysis Graduate Fellowship in connection with the theme of "Archipelagoes". An \$18000 stipend will support work on her proposal titled: "Island Hopping: Exploring bird-human relations across the Caribbean Archipelago/Atlantic Flyway."

Graduate student **Divya Karnad** has won a major international competitive grant from the Margaret McNamara Memorial Fund, which will partially cover her dissertation research/write up expenses.

Graduate student **Hudson McFann** was awarded a Fulbright-Hays Doctoral Dissertation Research Award to conduct nine months of doctoral research in Cambodia.

Graduate student **Samiah Moustafa** was awarded a Google Earth Engine Scholarship to attend the fall American Geophysical Union meetings, participated in the 2015 University of Minnesota Summer Polar Boot Camp, an intensive, five-day geospatial workshop, and received support to participate in the 2015 Esri International User Conference.

Graduate student **Kimberley Thomas** has been awarded a two year Mellon Post-doctoral Teaching Fellowship in the Humanities and Humanistic Social Sciences at the University of Pennsylvania. She will start her teaching duties in the Masters of Environmental Studies Program at Penn starting Fall 2015.

Departmental Graduate Student Awards

Jenny Isaacs

Graduate Teaching Excellence Award

Divya Karnad

Graduate Research Excellence Award

Helen Olsen

MaGrann Field Research Award

Allyssa Sobey

MaGrann Field Research Award

A complete list of Geography Graduate Student Awards and Honors can be found here:
[Geography Graduate Student Awards & Honors](#)

PhDs Awarded

Luke Drake	Abidah Setyowati
Deborah Greenwood	Asher Siebert
John Mioduszewski	Irene Tung
Eric Sarmiento	Peter Vancura
Deborah Scott	Irene Zager

MS Awarded

Katherine Bannor

Vincent Quinton was awarded The AAG Cryoshere section's Ralph Stockman Tarr Award for Best Undergraduate Presentation in 2015 for his Aresty Research.

Michael Endicott was awarded The Andrew Hill Clark award as the outstanding graduating senior in Geography.